

# Effective Reentry Practices in Tribal Communities: Promoting Health, Wellness, and Cultural Lifeways for Returning Tribal Citizens

2022 Second Chance Month

April 18, 2022

*This project was supported by Grant No. 2016-MU-BX-K011 awarded by the Bureau of Justice Assistance. The Bureau of Justice Assistance is a component of the Department of Justice's Office of Justice Programs, which also includes the Bureau of Justice Statistics, the National Institute of Justice, the Office of Juvenile Justice and Delinquency Prevention, the Office for Victims of Crime, and the SMART Office. Points of view or opinions in this document are those of the author and do not necessarily represent the official position or policies of the U.S. Department of Justice.*



# Virtual Meeting/Conference Recording Notice

This session is hosted by the Corrections & Community Engagement Technical Assistance Center (CCETAC). CCETAC is operated by the American Institutes for Research® (AIR®) which allows for the recording of audio, visuals, participants, and other information sent, verbalized, or utilized during business related meetings. By joining a meeting, you automatically consent to such recordings. Any participant who prefers to participate via audio only should disable their video camera so only their audio will be captured. Video and/or audio recordings of any AIR session shall not be transmitted to an external third party without the permission of AIR.

# American Institutes for Research

The American Institutes for Research (AIR) is a nonpartisan, not-for-profit organization that conducts behavioral and social science research and delivers technical assistance (TA) to solve some of the most urgent challenges in the U.S. and around the world. We do this work because when we look to the future, we see opportunities to close gaps that are rooted in injustice. At AIR, we know that equity begins with systems that work for everyone, so we lead with expertise, follow the evidence, and never stop drawing new connections to build a better, more equitable world.

AIR delivers TA for a subset of Second Chance Act grantees through the Corrections & Community Engagement Technical Assistance Center (CCETAC).



# Welcome and Introductions

## Presenters:

- **Janel McFeat**, Program Manager, Welcome Home Program Port Gamble S'Klallam Tribe, Washington
- **Tony Fish**, Program Manager, Muscogee Creek Nation Reintegration Program, Oklahoma
- **Elise Townsend**, Reentry Coordinator, Pascua Yaqui Tribe, Arizona
- **Hazel Hindsley**, Tribal Offender Reintegration Program Director, St. Croix Band of Chippewa Indians, Wisconsin
- **Stephanie Autumn**, Moderator and CCETAC Tribal Coach, American Institutes for Research



# Opening in a Good Way



# Your Tribal Reentry Vision



# Overview of Our Time Together

1. Promoting Health, Wellness, and Cultural Lifeways for Returning Tribal Citizens:
  - a. Overview of Four Diverse Second Chance Act (SCA) Tribal Reentry Programs
2. Guest Speaker Roundtable Discussion:
  - a. Fostering Tribal-State-Federal Partnerships to Ensure Sustainability
  - b. Weaving Cultural and Strength-Based Approaches
  - c. Giving Voice to Tribal Citizens With Lived Experience
3. Sharing National Reentry Resources and Tools
4. Participant Takeaways
5. Closing

# Promoting Health, Wellness, and Cultural Lifeways for Returning Tribal Citizens



**PASCUA YAQUI TRIBE  
REENTRY  
INITIATIVE**





# Port Gamble S'Klallam Tribe

## *The Welcome Home Program: A Human Dignity Approach to Reentry*

**Janel McFeat**

*Reentry Program Manager*  
Port Gamble S'Klallam Tribe/  
The Welcome Home Program



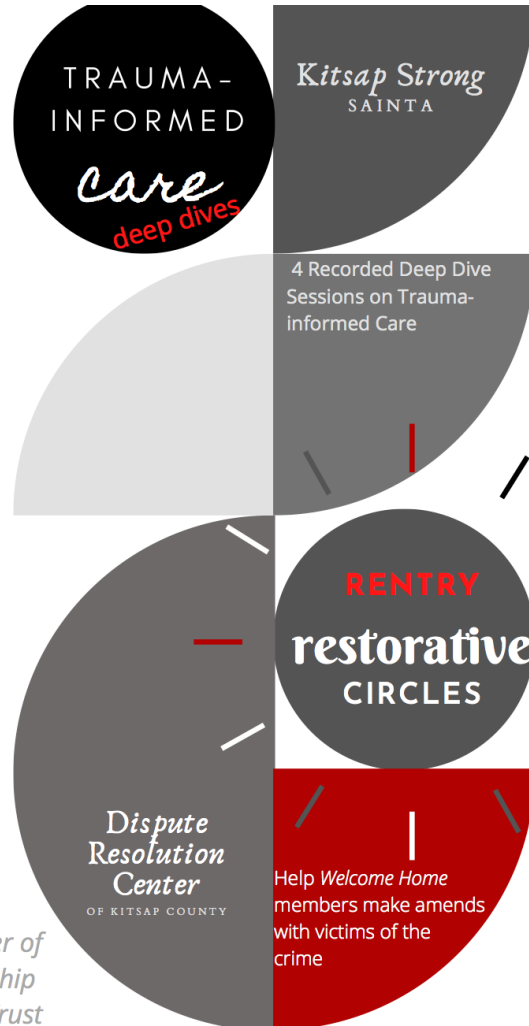
# Restorative/Community Listening Circles and Trauma Informed Care



## Tribal Law Enforcement Community Learning Series

A Collective Impact Collaborative Learning Experience hosted by Welcome Home Project for Kitsap County

*Experience the Power of Restoring Relationship and Rebuilding Trust*



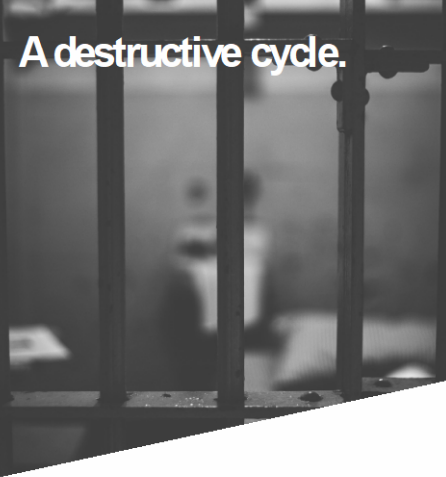
# Success Coaches

- Motivational Interviewing and Native American Motivational Interviewing
- Restorative Circle Practitioners
- Trauma-Informed Care
- Historical Trauma
- Strengthening Families/Cultural Classes
- UA's/Transport to Appointments/Housing Assistance/Removing Barriers

# Success Coaches

- Assist with educational pathways and job searching
- Wheel of Wellness, Intensive Supervision Program, Correction Assessment and Intervention System, Weekly Staffing, Substance Use Disorders and Mental Health Referrals
- Resiliency Training
- Recovery Coaching/Peer Circles
- Mindset Development/Cognitive Behavioral Programming

# A Place of Hope



**A destructive cycle.**

When you are incarcerated, the odds are stacked against you.

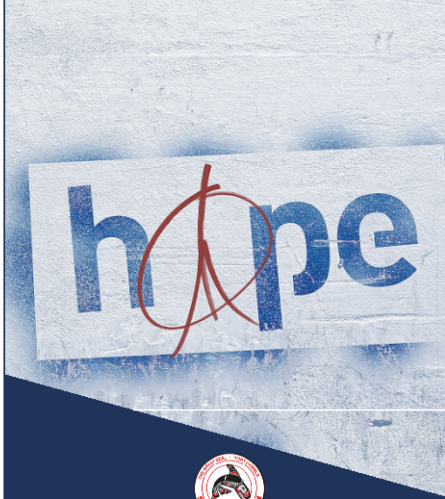
Imagine.

You've just been released from jail and are determined to make a fresh start. To break free from a lifetime cycle of addiction and incarceration.

But with the deck stacked against you, hope for a better future quickly disappears. You feel like you're out of options. It turns out that this time was no different.

**It doesn't need to be this way.**  
*If you want to break the cycle, reach out.*  
**We can help.**

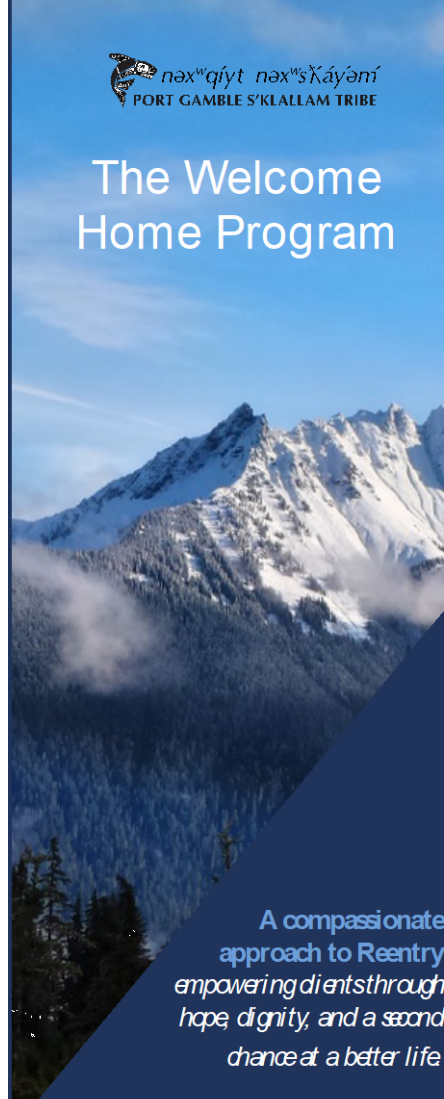
Call us at 360-297-6305

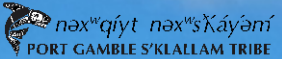


**Contact Us:**  
Janel McFeat  
Program Manager  
jmcfeat@pgst.nsn.us

Regina Avery  
Pre- and Post-Release Coordinator  
ravery@pgst.nsn.us  
360-297-6305 (office)  
360-517-5379 (cell)

This project was supported by Grant No. 2018-CYBX-0031 awarded by the Bureau of Justice Assistance. The Bureau of Justice Assistance is a component of the Department of Justice's Office of Justice Programs, which also includes the Bureau of Justice Statistics, The National Institute of Justice, The Office of Juvenile Justice and Delinquency Prevention, the Office for Victims of Crime, and the SMART Office. Points of view or opinions in this document are those of the author and do not necessarily represent the official position or policies of the U.S. Department of Justice.



  
PORT GAMBLE S'KLALLAM TRIBE

The Welcome Home Program

A compassionate approach to Reentry empowering clients through hope, dignity, and a second chance at a better life

# Muscogee (Creek) Nation Reintegration Program, Oklahoma



The Muscogee (Creek) Nation Reintegration Program, since its inception in 2004, has worked with all three branches of tribal government, as well as local, state, and federal entities, to meet the needs of formerly incarcerated Tribal members. Although the program is voluntary on the client's part, Oklahoma state district court judges have mandated client participation to meet the needs of the courts and to provide an alternative to incarceration.

# Muscogee (Creek) Nation Reintegration Program—Goals

1. Support jurisdictions within the Muscogee (Creek) Nation territory to develop and implement comprehensive and collaborative strategies that address the challenges posed by reentry to increase public safety and reduce recidivism for individuals reentering communities from incarceration who are medium-to-high risk for recidivism
2. Decrease recidivism among Muscogee (Creek) citizens by at least 50%
3. Implement sustainable methods of data collection to identify home communities and schools of Tribal members released from prison
4. Build capacity within the Oklahoma Department of Corrections during intake and pre-release
5. Increase Muscogee (Creek) Nation case workers' skills with case management

# Muscogee Creek Nation Reintegration Program, Oklahoma—Services

- Provides improved methods of self-assessment intake through integration of technology
- Obtained additional staff training in risk assessment analysis and interview skills
- Increased professional development opportunities for all case management workers
- Adapted existing risk assessment tools to measure Native American cultural influence and identify additional protective factors
- Increased depth of relationship and capacity within county jails and Oklahoma Department of Corrections
- Facilitated discussions and actual modifications to the Oklahoma Department of Corrections intake form and policies regarding Tribal contact



# The Pascua Yaqui Reentry Initiative

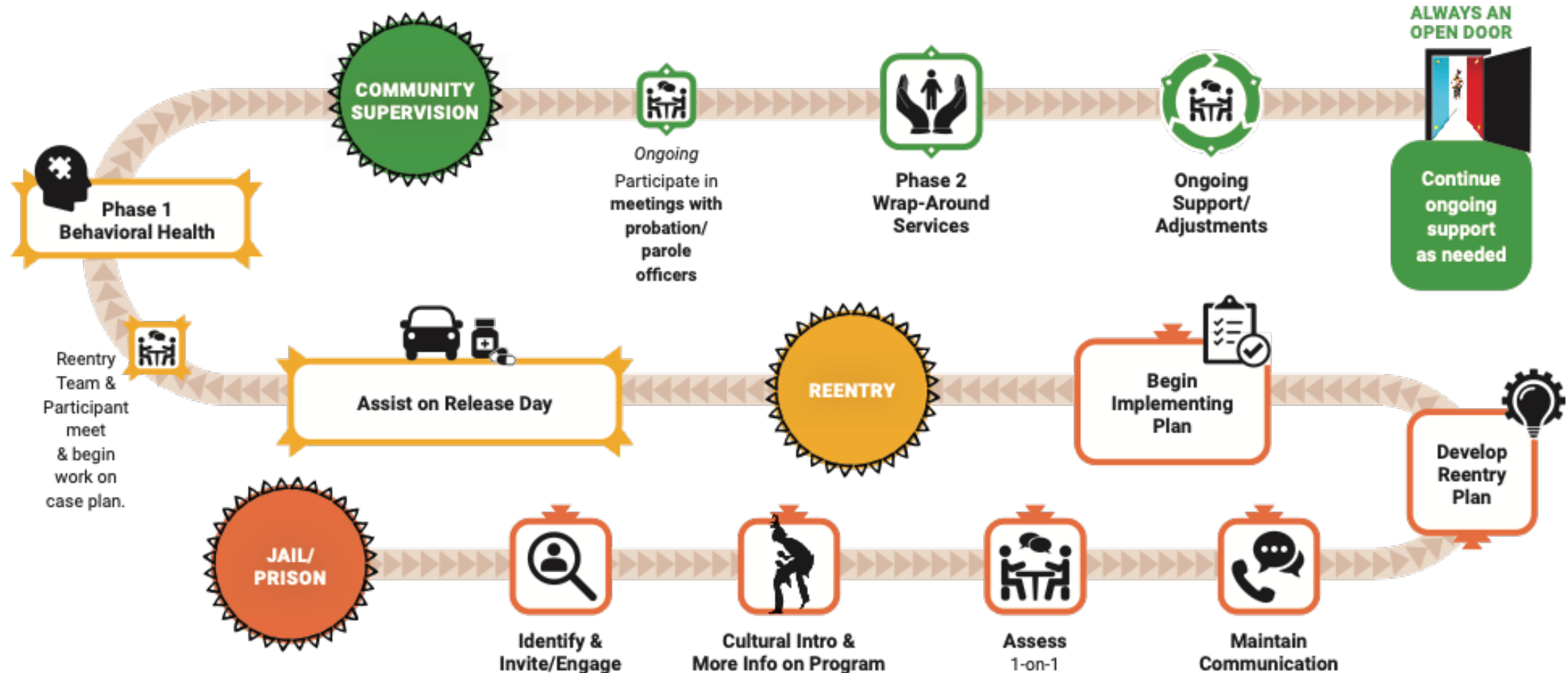


- Design, implement, and evaluate sustainable policy changes to better support Pascua Yaqui members returning to the community
- Improve upon information sharing among agencies and jurisdictions to better serve Pascua Yaqui members in their reentry process
- Expand the engagement of Pascua Yaqui members with their culture while incarcerated and after release
- Use culturally appropriate screening and assessment tools to identify individual reentry needs and develop individualized case plans that will support a successful transition from prison to the community

# The Pascua Yaqui Reentry Initiative

- Initiative includes partnerships and collaboration within Tribal departments and with non-Tribal partners throughout the State of Arizona
- The initiative is guided by a Tribal resolution to ensure Tribal interagency collaboration and the sharing of data and information on incarceration, recidivism, and success rates
- This initiative integrates best practices that are culturally and healing informed and already have proven to be successful within the Tribe

# Pascua Yaqui Tribe Reentry Initiative Program Goals—Infographic



# **The St. Croix Tribal Offender Reintegration Program**

Staff support program participants in the development of a renewed sense of “connectedness” to self, family, and community.

SCTORP clients engage in mental health, substance abuse and counseling services, as well as community/cultural care to aid in the cultivation of a healthy support network that will lead to the reduction of high-risk behaviors related to reoffending.

The framework of the SCTORP services have resulted in clients’ making better life decisions and acquiring improved coping skills—increasing the client’s abilities to live a healthy and crime-free life.

# Important Outcomes for SCTORP Clients

- ***Collaborative coordination*** between Tribal services; county, state, and federal agencies; probation and parole; SCTORP case managers; and most importantly, the SCTORP clients themselves.
- Clients and service providers ***work together*** in the development of a collaborative care plan for clients that identifies and addresses behavior, health, substance misuse, and service needs.
- Integration of Tribal practice-based evidence, evidence-based services, and Tribal lifeways protocols to ***promote the health and wellness of the clients.***

# St Croix Tribe Offender Reentry Program

Our mission is called Bimadiziwin “The good life”



We are all warriors, and we can fight these challenges together. We use both Western-based methods and Indigenous cultural practices to address our clients' reentry needs.

# Tribal Reentry BEST Practices Roundtable Discussion



# Bureau of Justice Assistance Planning a Reentry Program: A Toolkit for Tribal Communities



Designed to help Tribal justice system practitioners create or enhance reentry programs for American Indians and Alaska Natives returning from jail or prison. It also offers guidance for practitioners who currently are working in a reentry program.



# National Indian Health Board: Reentry Population Programming Toolkit

- Researched and published a series of articles on reentry programming
- Additional resources that Tribes may use to work with people recently released from jail or prison



# Washington Center for Equitable Growth

Articles and resources for reentry in Native American communities that offer lessons of resilience and nationwide policy solutions



# SCA Reentry Webinar Takeaways



In the chat, share the following:

- I am leaving this webinar with new knowledge on ...
- I have new ideas about ...
- I would like more information on ...

# Closing



# Thank you!

Join the NRRC's distribution list to receive  
National Reentry Resource Center updates!

<https://nationalreentryresourcecenter.org/subscribe>

For more information, contact:

[info@nationalreentryresourcecenter.org](mailto:info@nationalreentryresourcecenter.org)

