

Reentry Week | April 26-30, 2021

#ReentryMatters | #ReentryWeek | #ReentryWeek21

During Reentry Week, the National Reentry Resource Center (NRRC) will be your home for resources and virtual events .

Engaging Communities to Create Sustained Change in Reentry

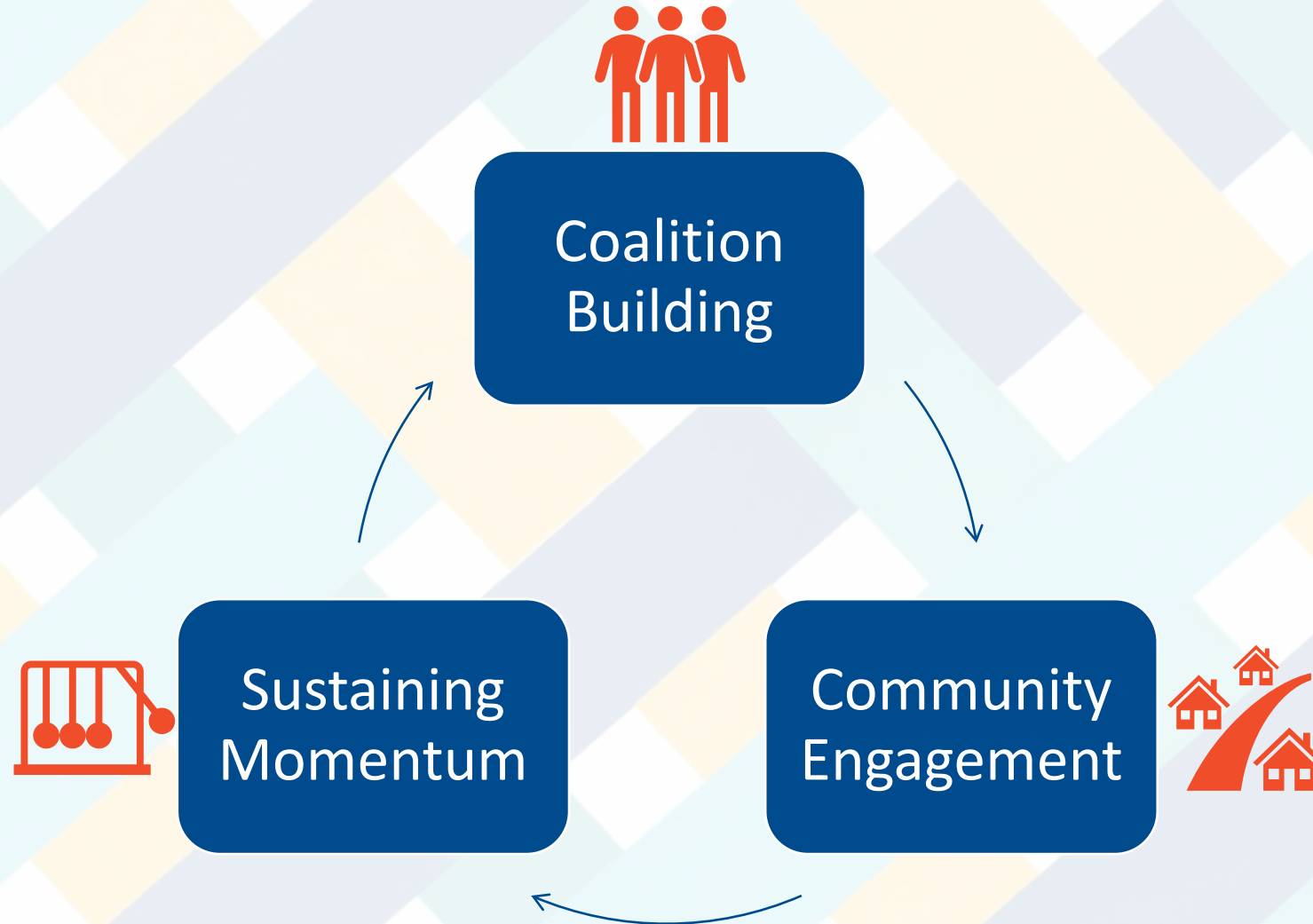
Disclaimer

“The following presentation was prepared under Cooperative Agreement Number 2020-CZ-BX-K002 from the Bureau of Justice Assistance (BJA), Office of Justice Programs, U.S. Department of Justice. The opinions, findings, conclusions, or recommendations expressed in this presentation are those of the authors and do not necessarily represent the official position or policies of the U.S. Department of Justice.”

Speakers

- **Derrick Franke**
 - **American Institutes for Research**
- **Lena Hackett**
 - **Community Solutions, Inc.**
- **Saad Soliman**
 - **JustLeadeshipUSA**

The Secret Sauce



Remember

“Never doubt that a small group of thoughtful, committed, citizens can change the world. Indeed, it is the only thing that ever has.”

-Margaret Mead

Creating Sustained Change in Reentry

Part 1. Coalition Building

Lena Hackett

Coalition

An alliance for combined action

A group of people who come together for
a common cause

Coalesce

To grow together

To unite into a whole

To unite for a common purpose

What's in a Name?

Steering Committee

A group that decides on the priorities of an organization and manages the general operations

Task Force

A unit specifically organized for a task; temporary organization created to solve a particular problem

Core Components

Marion County Reentry Coalition



MARION COUNTY
RE-ENTRY COALITION

Common Targeted Result

“All Adults in Marion County Involved in the Justice System are Successfully Integrated into the Community.”

Priority Focus

Disproportionate Impact across the system on People of Color.

Authorization

The “Authorizing Body” is defined as the entity that “holds” the condition of well-being for the population.

The Governor’s Office

The Mayor’s Office

The United Way

Department of Correction

A Sense of Urgency

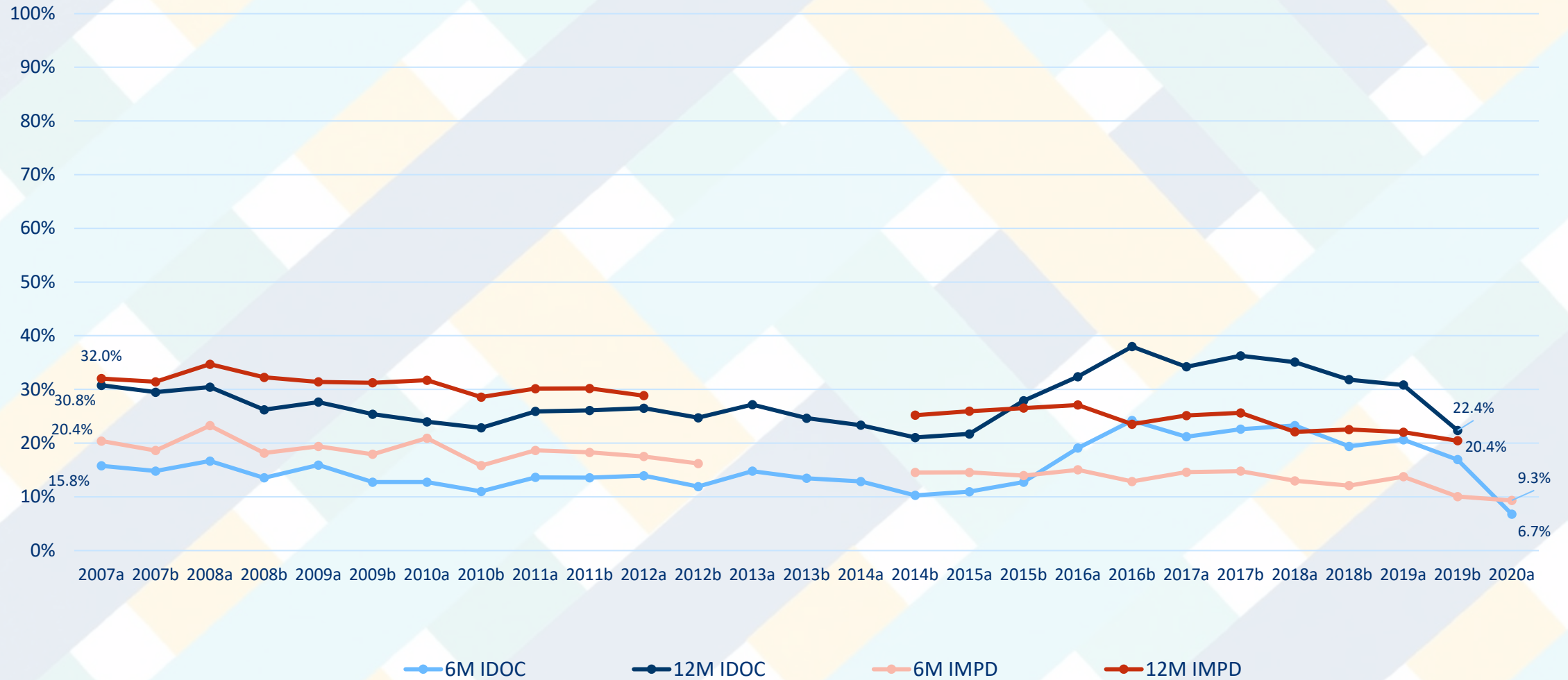
- Every day that progress is not made toward this result, people are impacted.
- Not about planning – it is about action – what are you going to do in the next 30 days?
- **Not dependent on funding – what are no cost/low cost strategies**

Indicators of Success

- 6 month re-arrest rate **20.4% to 9.3%**
- 12 month re-arrest rate **32% to 20.4%**

- 6 month return to incarceration rate **15.8% to 6.7%**
- 12 month return to incarceration rate **30.8% to 22.4%**

6- and 12-Month Recidivism Rates



% of people released from IDOC to Marion County who were arrested by IMPD (outright) and/or who returned to IDOC within 6- and 12-months, by 6-month IDOC Release Cohort; Release cohorts by 1st and 2nd half of each calendar year. Data Source: Data provided by Indiana Department of Correction and Marion County Sherriff's Office to Community Solutions, Inc. (updated March 2021)

Creating Sustained Change in Reentry

Part 2. Community Engagement

Lena Hackett

Partners

Talk to Action

- What **systems/agencies** need to be in the room
- Demographics – **Race, Age, Gender**
- **Sphere of Influence**

Partners - MCRC Members

Federal Agencies:

Federal Bureau of Prisons
United States Probation
U.S. Department of HUD

State Agencies:

Indiana Department of Correction - Parole
Indiana Department of Workforce Development
Indiana Family & Social Services Administration,
Division of Mental Health & Addiction
Indiana Public Defender Council

For Profit Agencies/Businesses:

Allegiance Staffing
Anthem Indiana
Blanc Consulting Group
CareSource

Universities:

Indiana University, Purdue University Indianapolis
Indiana Wesleyan University
Marion University

City/County Agencies:

City of Indianapolis, Office of Public Health and Safety
Indianapolis-Marion County City-County Council
Marion County Community Corrections
Marion County Prosecutor's Office
Marion County Public Health Department
Marion County Public Defender Agency
Marion County Sheriff's Office
Marion County Superior Court, Probation
Indy Chamber
EmployIndy

Nonprofit, Community-based Agencies

ACLU Indiana
Arc of Indiana
Aspire
The Bail Project
Brookside Community Church
CAFÉ
Central Indiana Community Foundation (CICF)
Coalition for Homelessness Intervention & Prevention
Christamore House
Edna Martin Christian Center
Eskenazi Health/Sandra Eskenazi
Goodwill Industries of Central and Southern Indiana

Nonprofit, Community-based Agencies Cont.

Growing Indy Group
Hamilton Center
Horizon House
HVAF
Indianapolis Legal Aid Society, Inc
Indianapolis Urban League
Indy Reads
John Boner Neighborhood Center
Neighborhood Christian Legal Clinic
Public Advocates in Community Re-Entry, Inc. (PACE)
RecycleForce
Step-Up, Inc.
Trusted Mentors
UniteIndy
Use What You've Got Prison Ministry
Volunteers of America
1 Like Me

Most Importantly

Equal Power

Consensus Based – no voting – no winners and losers

Proposal based decision making

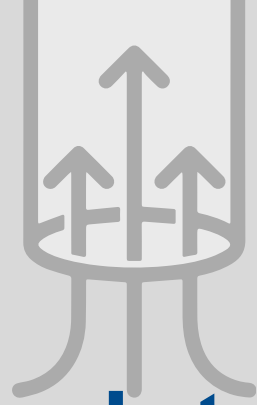
Compromise

Infrastructure

- ✓ Convenor
- ✓ Facilitator
- ✓ Documenter

MCRC Strategy Groups

Wrap Around Services	Common Screening Tool; Shared Scheduling
Education and Employment	Transitional Jobs Hybrid System
System Re-Design	Wholistic Public Defense System
Housing	Alternative Tenant Selection Plans
Policy	Bail Reform



If done right, this is a
game changer.

Brings a collective voice that
authentically changes the
system

How do you get there?

INVEST TIME IN DEVELOPING MEMBERS



Relationship building
Skill development

What are the keys to success?



- ⚙ Focus on the Result
- ⚙ No power dynamic
- ⚙ Action agenda *with accountability*
- ⚙ Authorization to move to action
- ⚙ Strong infrastructure

Creating Sustained Change in Reentry

Part 3. Sustaining Momentum

Saad Soliman

What does bridging mean in the context of reentry?

Bridging simply means collaboration and having vested and active partners at the table, such that when challenges arise, they are addressed effectively and efficiently.

Working with partners that understand the difference between “Leadership” and “Followship.”

Both are equally critical roles and are often interchangeable in meaningful collaboratives.

Humanizing Change

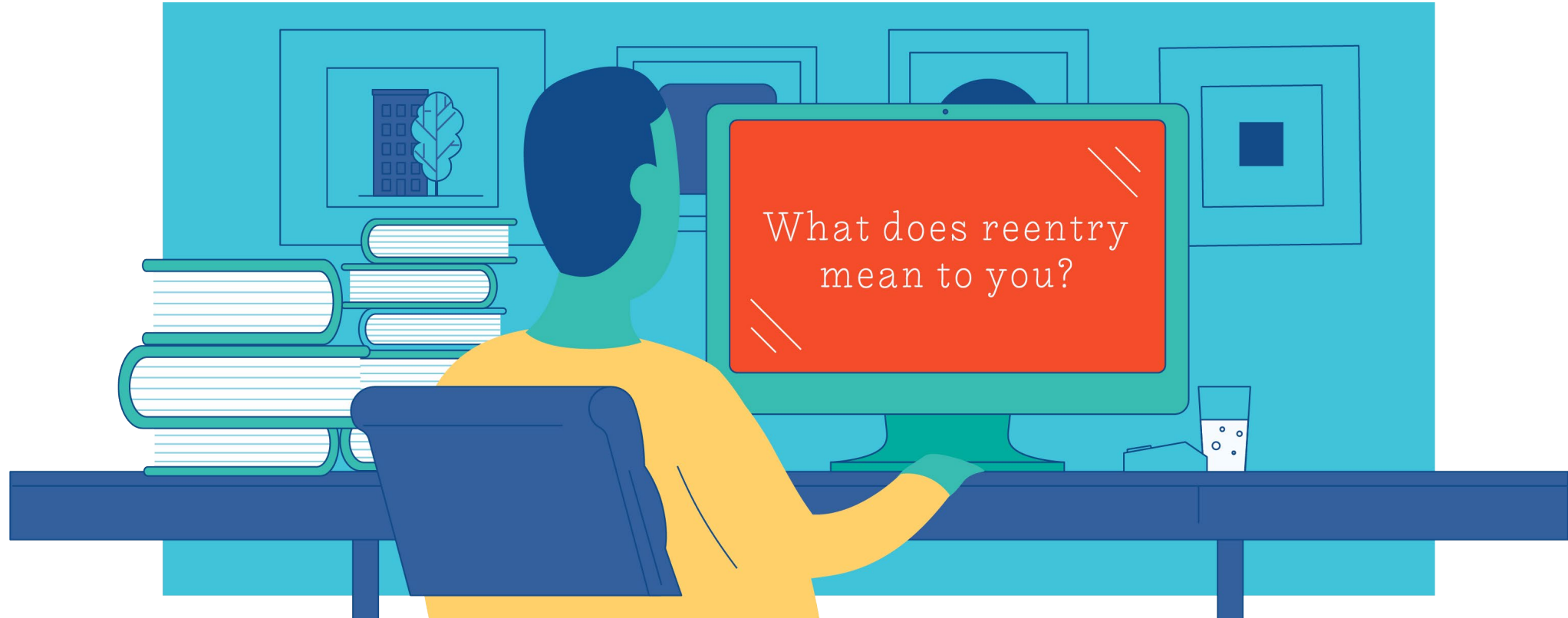
Where do I begin?

There are three major components to humanizing change:

- **Humanizing Language:** Discarding the use of terms and language that dehumanize people and adopting language that indicates that people are seen, heard and valued.
- **Policy and Procedure updates:** Incorporating diversity, equity and inclusion into organizational values through policy galvanizes the commitment to this incredibly important task, which will translate into delivery and optimize outcomes.
- **Identifying Cultural Competence:** Convening the right people at the table. Reentry is best informed when people directly impacted by the systems are at the table of program delivery and optimization. The value of experiential learning in this space creates meaningful change towards refining systems created to aid and assist that may not be achieving the desired outcome.

The Impact of Successful Collaborations

- Increased Public Safety
- Enhanced Family Reunification
- Economic Development
- Positive Leadership is developed and challenges are identified, addressed and overall health and wellness is achieved.



The primary mission of the NRRRC is to advance the knowledge base of the reentry field.
The NRRRC serves as a convener and coordinator of SCA grantees.

Track News and Updates on Social Media

#ReentryMatters

#ReentryWeek

#ReentryWeek21



Thank you!

Join our distribution list to receive
National Reentry Resource Center updates!

<https://nationalreentryresourcecenter.org/subscribe>

For more information, contact:

info@nationalreentryresourcecenter.org